



The New York State School Report Card [2013 - 14]

NAME: FORESTVILLE CSD

BEDS Code: 061503040000

ADDRESS: 12 WATER ST, FORESTVILLE, NY 14062

PHONE: (716) 965-2742

The New York State Report Card is an important part of the Board of Regents' effort to raise learning standards for all students. It provides information to the public on school/district enrollment and staff, student performance, and other measures of school and district performance. Knowledge gained from the report card on a school's or district's strengths and weaknesses can be used to improve instruction and services to students.

FORESTVILLE CSD Enrollment (2013 - 14)**K-12 Enrollment: 511**

These enrollment data are collected as part of NYSED's Student Information Repository System (SIRS). These counts are as of "BEDS Day" which is typically the first Wednesday in October. Available are enrollment counts for public and charter school students by various demographics for the 2013 - 14 school year. For nonpublic school enrollment data please see the [Non-Public School Enrollment and Staff](#) information on our Information and Reporting Services webpage

Students by Gender

Male		Female	
264	52%	247	48%

Students by Ethnicity

American Indian or Alaska Native	Black or African American	Hispanic or Latino	Asian or Native Hawaiian/Other Pacific Islander	White	Multiracial
2	11	30	1	454	13
0%	2%	6%	0%	89%	3%

Other Groups

Limited English Proficient Students		Students with Disabilities		Economically Disadvantaged Students	
—	—	49	10%	249	49%

*Fields with dashes have data suppressed in order to prevent reporting personally identifiable information.

Students by Grade

Pre-K (Half Day)	Kindergarten (Full Day)	1st Grade	2nd Grade	3rd Grade	4th Grade
23	31	36	44	43	30
5th Grade	6th Grade	7th Grade	8th Grade	9th Grade	10th Grade
30	42	35	40	33	54
11th Grade	12th Grade				
41	52				

Average Class Size (2013 - 14)

Common Branch			
19			
Grade 8 English	Grade 8 Mathematics	Grade 8 Science	Grade 8 Social Studies
20	20	16	20
Grade 10 Mathematics			Grade 10 Science
15			16

Free and Reduced-Price Lunch (2013 - 14)

Eligible for Free Lunch		Eligible for Reduced-Price Lunch	
150	29%	79	15%

Attendance and Suspensions (2012 - 13)

Annual Attendance Rate		Student Suspensions	
95%	19	4%	

Teacher Turnover Rate (2012 - 13)

Turnover Rate of Teachers with Fewer Than Five Years of Experience	Turnover Rate of All Teachers
0%	13%

Staff Counts (2013 - 14)

Principals	Assistant Principals	Other Professional Staff	Paraprofessionals
2	0	5	2

Teacher Qualifications (2011-12 through 2013-14)

	2011 - 12	2012 - 13	2013 - 14
Total Number of Teachers	52	53	51
Percent with No Valid Teaching Certificate	0%	0%	0%
Percent Teaching Out of Certification	0%	0%	2%
Percent with Fewer Than Three Years of Experience	4%	2%	4%
Percentage with Master's Degree Plus 30 Hours or Doctorate	15%	21%	18%
Total Number of Core Classes	159	159	120
Percent Not Taught by Highly Qualified Teachers in This District	0%	0%	0%
Percent Not Taught by Highly Qualified Teachers Statewide	2%	3%	4%
Percent Not Taught by Highly Qualified Teachers in High-Poverty Schools Statewide	4%	6%	9%
Percent Not Taught by Highly Qualified Teachers in Low-Poverty Schools Statewide	1%	1%	1%
Total Number of Classes	207	209	188
Percent Taught by Teachers Without Appropriate Certification	1%	1%	2%

High School Completers (2013 - 14)

Results by Student Group	Completers (Graduates + IEP Diplomas)	Graduates (Regents + Local Diplomas)	Regents Diploma		Regents with Advanced Designation	
	Number of Students	Number of Students	Number of Students	Percent of Graduates	Number of Students	Percent of Graduates
All Students	46	46	42	91%	11	24%
General Education	39	39	39	100%	11	28%
Students with Disabilities	7	7	3	43%	0	0%
Results by Student Group	Regents with CTE Endorsement		Local Diplomas		Commencement Credentials	
	Number of Students	Percent of Graduates	Number of Students	Percent of Graduates	Number of Students	Percent of Completers
All Students	8	17%	4	9%	0	0%
General Education	6	15%	0	0%	0	0%
Students with Disabilities	2	29%	4	57%	0	0%

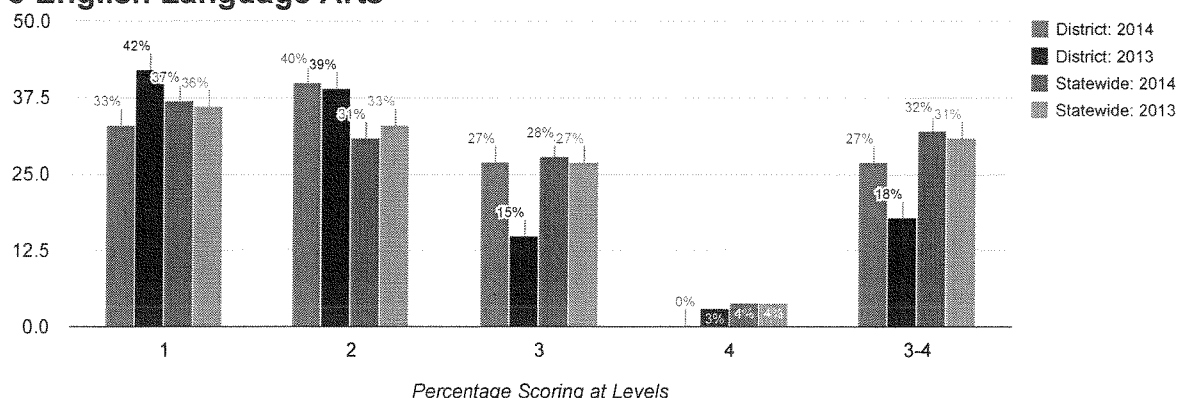
High School Non-completers (2013 - 14)

Results by Student Group	Dropped Out		Entered Approved High School Equivalency Preparation Program		Total Noncompleters	
	Number of Students	Percent of Students	Number of Students	Percent of Students	Number of Students	Percent of Students
All Students	—	—	—	—	—	—
General Education	—	—	—	—	—	—
Students with Disabilities	—	—	—	—	—	—

Post-graduation Plans of Completers (2013 - 14)

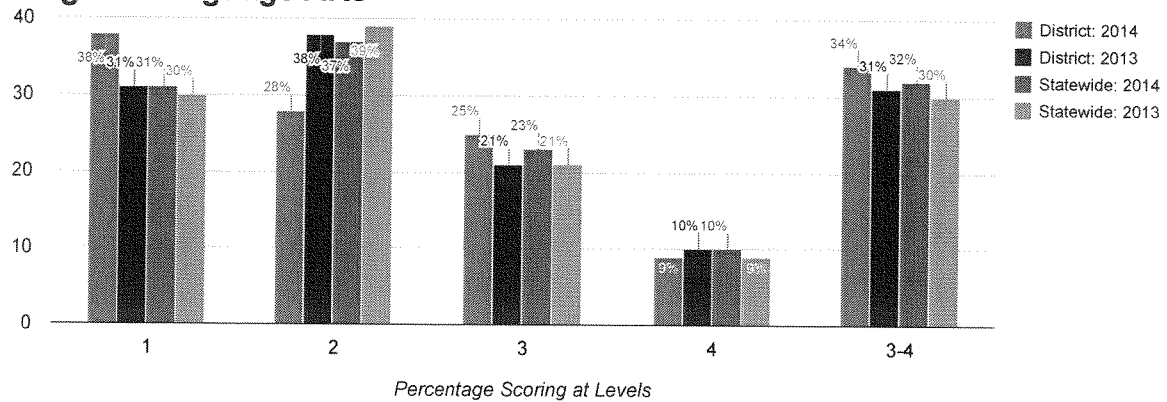
Results by Student Group	To Four-Year College		To Two-Year College		To Other Post-Secondary		To the Military	
	Number of Students	Percent of Completers	Number of Students	Percent of Completers	Number of Students	Percent of Completers	Number of Students	Percent of Completers
All Students	12	26%	25	54%	0	0%	2	4%
General Education	12	31%	20	51%	0	0%	1	3%
Students with Disabilities	0	0%	5	71%	0	0%	1	14%

Results by Student Group	To Employment		To Adult Services		To Other Known Plans		Plan Unknown	
	Number of Students	Percent of Completers	Number of Students	Percent of Completers	Number of Students	Percent of Completers	Number of Students	Percent of Completers
All Students	7	15%	0	0%	0	0%	0	0%
General Education	6	15%	0	0%	0	0%	0	0%
Students with Disabilities	1	14%	0	0%	0	0%	0	0%

Grade 3 English Language Arts**Mean Score**

	2014						2013					
	300						296					
Results by Student Group	2014						2013					
	Total Tested	Percent Scoring at Level(s)				% Proficient (Levels 3 and 4)	Total Tested	Percent Scoring at Level(s)				% Proficient (Levels 3 and 4)
All Students	45	33	40	27	0	27	33	42	39	15	3	18
General Education	43	—	—	—	—	—	27	33	44	19	4	22
Students with Disabilities	2	—	—	—	—	—	6	83	17	0	0	0
American Indian or Alaska Native	0	0	0	0	0	0	1	—	—	—	—	—
Black or African American	2	—	—	—	—	—	2	—	—	—	—	—
Hispanic or Latino	1	—	—	—	—	—	1	—	—	—	—	—
White	41	—	—	—	—	—	28	43	36	18	4	21
Multiracial	1	—	—	—	—	—	1	—	—	—	—	—
Small Group Total	45	33	40	27	0	27	5	40	60	0	0	0
Female	23	26	39	35	0	35	17	41	35	18	6	24
Male	22	41	41	18	0	18	16	44	44	13	0	13
English Proficient	45	33	40	27	0	27	33	42	39	15	3	18
Economically Disadvantaged	21	43	33	24	0	24	13	62	31	0	8	8
Not Economically Disadvantaged	24	25	46	29	0	29	20	30	45	25	0	25
Not Migrant	45	33	40	27	0	27	33	42	39	15	3	18

Grade 4 English Language Arts



Mean Score

2014

2013

292

302

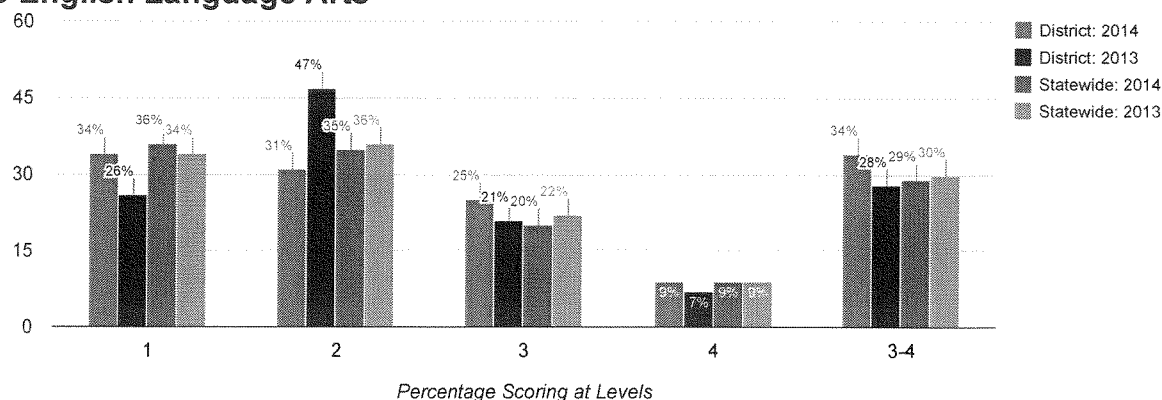
Results by Student Group

2014

2013

Total Tested	Percent Scoring at Level(s)				% Proficient (Levels 3 and 4)	Total Tested	Percent Scoring at Level(s)				% Proficient (Levels 3 and 4)
	1	2	3	4			1	2	3	4	
32	38	28	25	9	34	29	31	38	21	10	31
26	23	35	31	12	42	24	21	42	25	13	38
6	100	0	0	0	0	5	80	20	0	0	0
0	0	0	0	0	0	1	—	—	—	—	—
0	0	0	0	0	0	1	—	—	—	—	—
2	—	—	—	—	—	0	0	0	0	0	0
1	—	—	—	—	—	1	—	—	—	—	—
26	35	31	23	12	35	26	—	—	—	—	—
3	—	—	—	—	—	0	0	0	0	0	0
6	50	17	33	0	33	29	31	38	21	10	31
17	41	18	24	18	41	16	19	44	25	13	38
15	33	40	27	0	27	13	46	31	15	8	23
32	38	28	25	9	34	29	31	38	21	10	31
18	56	33	11	0	11	10	20	70	10	0	10
14	14	21	43	21	64	19	37	21	26	16	42
32	38	28	25	9	34	29	31	38	21	10	31

Grade 5 English Language Arts



Mean Score

2014

2013

299

304

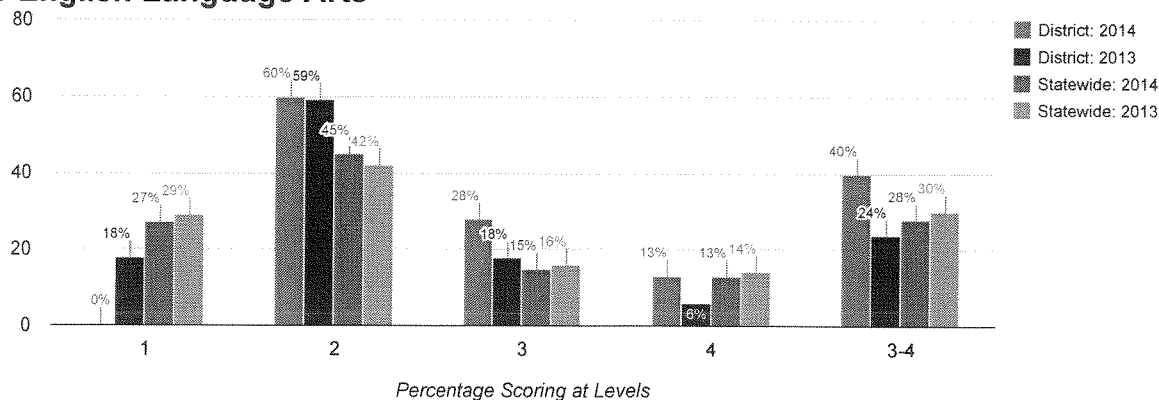
Results by Student Group

2014

2013

Total Tested	Percent Scoring at Level(s)				% Proficient (Levels 3 and 4)	Total Tested	Percent Scoring at Level(s)				% Proficient (Levels 3 and 4)
	1	2	3	4			1	2	3	4	
32	34	31	25	9	34	43	26	47	21	7	28
27	22	37	30	11	41	40	—	—	—	—	—
5	100	0	0	0	0	3	—	—	—	—	—
1	—	—	—	—	—	1	—	—	—	—	—
1	—	—	—	—	—	0	0	0	0	0	0
2	—	—	—	—	—	2	—	—	—	—	—
28	—	—	—	—	—	39	—	—	—	—	—
0	0	0	0	0	0	1	—	—	—	—	—
32	34	31	25	9	34	43	26	47	21	7	28
19	32	21	32	16	47	20	25	50	15	10	25
13	38	46	15	0	15	23	26	43	26	4	30
32	34	31	25	9	34	43	26	47	21	7	28
16	44	38	13	6	19	16	38	50	13	0	13
16	25	25	38	13	50	27	19	44	26	11	37
32	34	31	25	9	34	43	26	47	21	7	28

Grade 6 English Language Arts



Mean Score

2014

2013

314

303

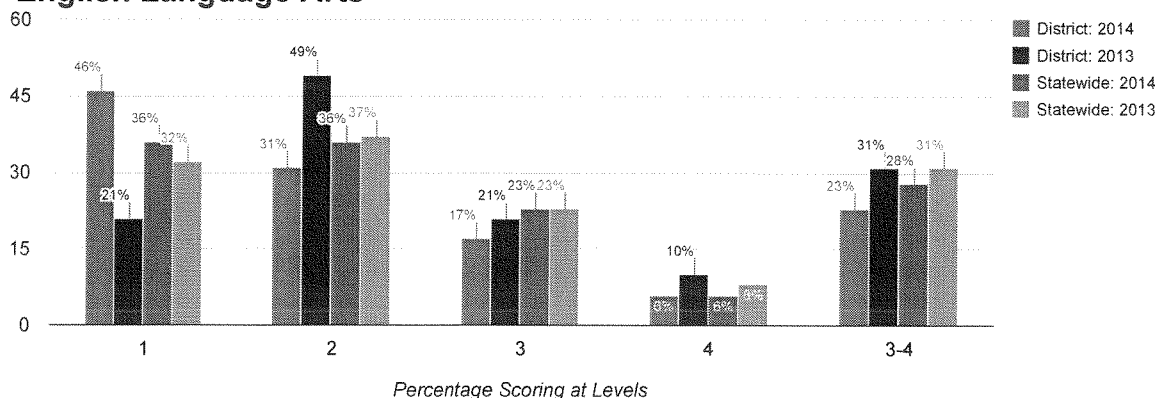
Results by Student Group

2014

2013

	Total Tested	Percent Scoring at Level(s)				% Proficient (Levels 3 and 4)	Total Tested	Percent Scoring at Level(s)				% Proficient (Levels 3 and 4)
		1	2	3	4			1	2	3	4	
All Students	40	0	60	28	13	40	34	18	59	18	6	24
General Education	37	—	—	—	—	—	28	7	64	21	7	29
Students with Disabilities	3	—	—	—	—	—	6	67	33	0	0	0
American Indian or Alaska Native	1	—	—	—	—	—	0	0	0	0	0	0
Black or African American	0	0	0	0	0	0	1	—	—	—	—	—
Hispanic or Latino	3	—	—	—	—	—	4	—	—	—	—	—
White	34	0	56	29	15	44	29	21	55	17	7	24
Multiracial	2	—	—	—	—	—	0	0	0	0	0	0
Small Group Total	6	0	83	17	0	17	5	0	80	20	0	20
Female	17	0	59	29	12	41	18	22	44	22	11	33
Male	23	0	61	26	13	39	16	13	75	13	0	13
English Proficient	40	0	60	28	13	40	34	18	59	18	6	24
Economically Disadvantaged	18	0	78	17	6	22	19	16	63	21	0	21
Not Economically Disadvantaged	22	0	45	36	18	55	15	20	53	13	13	27
Not Migrant	40	0	60	28	13	40	34	18	59	18	6	24

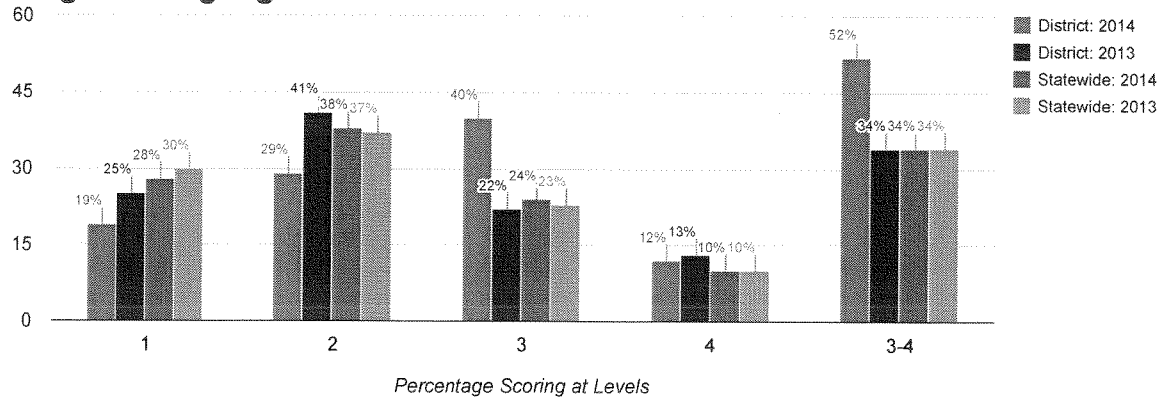
Grade 7 English Language Arts



Mean Score

	2014						2013					
	290						305					
Results by Student Group	2014						2013					
	Total Tested	Percent Scoring at Level(s)				% Proficient (Levels 3 and 4)	Total Tested	Percent Scoring at Level(s)				% Proficient (Levels 3 and 4)
All Students	35	46	31	17	6	23	39	21	49	21	10	31
General Education	29	38	34	21	7	28	37	—	—	—	—	—
Students with Disabilities	6	83	17	0	0	0	2	—	—	—	—	—
Black or African American	2	—	—	—	—	—	0	0	0	0	0	0
Hispanic or Latino	4	—	—	—	—	—	2	—	—	—	—	—
White	28	46	36	11	7	18	36	—	—	—	—	—
Multiracial	1	—	—	—	—	—	1	—	—	—	—	—
Small Group Total	7	43	14	43	0	43	39	21	49	21	10	31
Female	17	18	47	24	12	35	22	9	55	27	9	36
Male	18	72	17	11	0	11	17	35	41	12	12	24
English Proficient	35	46	31	17	6	23	39	21	49	21	10	31
Economically Disadvantaged	23	43	35	22	0	22	16	25	50	19	6	25
Not Economically Disadvantaged	12	50	25	8	17	25	23	17	48	22	13	35
Not Migrant	35	46	31	17	6	23	39	21	49	21	10	31

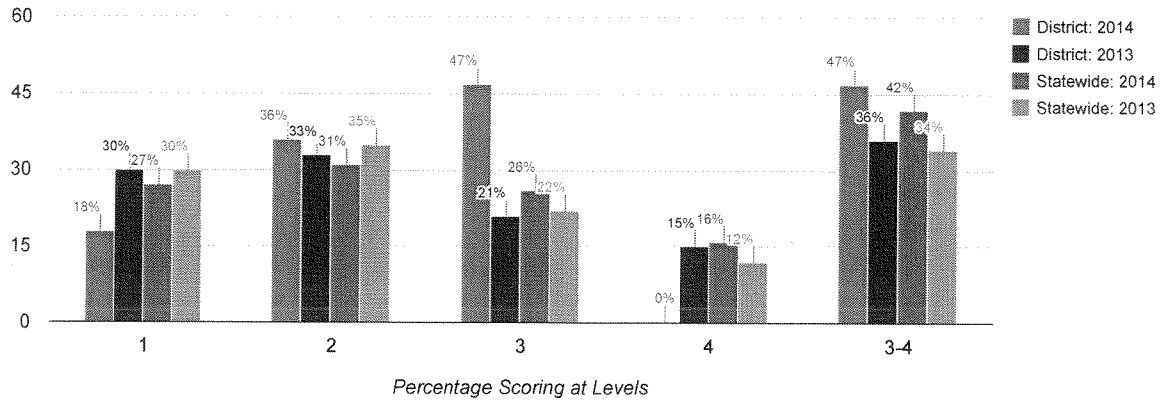
Grade 8 English Language Arts



Mean Score

Results by Student Group	2014						2013					
	309						303					
	2014						2013					
	Total Tested	Percent Scoring at Level(s)				% Proficient (Levels 3 and 4)	Total Tested	Percent Scoring at Level(s)				% Proficient (Levels 3 and 4)
		1	2	3	4			1	2	3	4	
All Students	42	19	29	40	12	52	32	25	41	22	13	34
General Education	38	—	—	—	—	—	29	—	—	—	—	—
Students with Disabilities	4	—	—	—	—	—	3	—	—	—	—	—
Hispanic or Latino	2	—	—	—	—	—	2	—	—	—	—	—
White	40	—	—	—	—	—	30	—	—	—	—	—
Small Group Total	42	19	29	40	12	52	32	25	41	22	13	34
Female	25	12	28	48	12	60	12	25	42	25	8	33
Male	17	29	29	29	12	41	20	25	40	20	15	35
English Proficient	42	19	29	40	12	52	32	25	41	22	13	34
Economically Disadvantaged	20	30	40	20	10	30	13	38	46	8	8	15
Not Economically Disadvantaged	22	9	18	59	14	73	19	16	37	32	16	47
Not Migrant	42	19	29	40	12	52	32	25	41	22	13	34

Grade 3 Mathematics



Mean Score

2014

2013

306

300

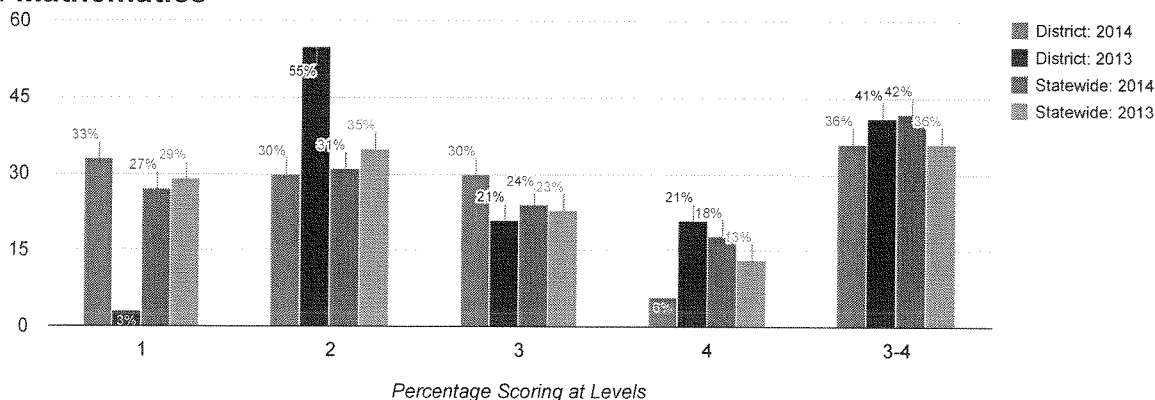
Results by Student Group

2014

2013

	Total Tested	Percent Scoring at Level(s)				% Proficient (Levels 3 and 4)	Total Tested	Percent Scoring at Level(s)				% Proficient (Levels 3 and 4)
		1	2	3	4			1	2	3	4	
All Students	45	18	36	47	0	47	33	30	33	21	15	36
General Education	43	—	—	—	—	—	27	19	37	26	19	44
Students with Disabilities	2	—	—	—	—	—	6	83	17	0	0	0
American Indian or Alaska Native	0	0	0	0	0	0	1	—	—	—	—	—
Black or African American	2	—	—	—	—	—	2	—	—	—	—	—
Hispanic or Latino	1	—	—	—	—	—	1	—	—	—	—	—
White	41	—	—	—	—	—	28	32	25	25	18	43
Multiracial	1	—	—	—	—	—	1	—	—	—	—	—
Small Group Total	45	18	36	47	0	47	5	20	80	0	0	0
Female	23	4	26	70	0	70	17	29	29	24	18	41
Male	22	32	45	23	0	23	16	31	38	19	13	31
English Proficient	45	18	36	47	0	47	33	30	33	21	15	36
Economically Disadvantaged	21	19	38	43	0	43	13	46	38	8	8	15
Not Economically Disadvantaged	24	17	33	50	0	50	20	20	30	30	20	50
Not Migrant	45	18	36	47	0	47	33	30	33	21	15	36

Grade 4 Mathematics



Mean Score

2014

2013

298

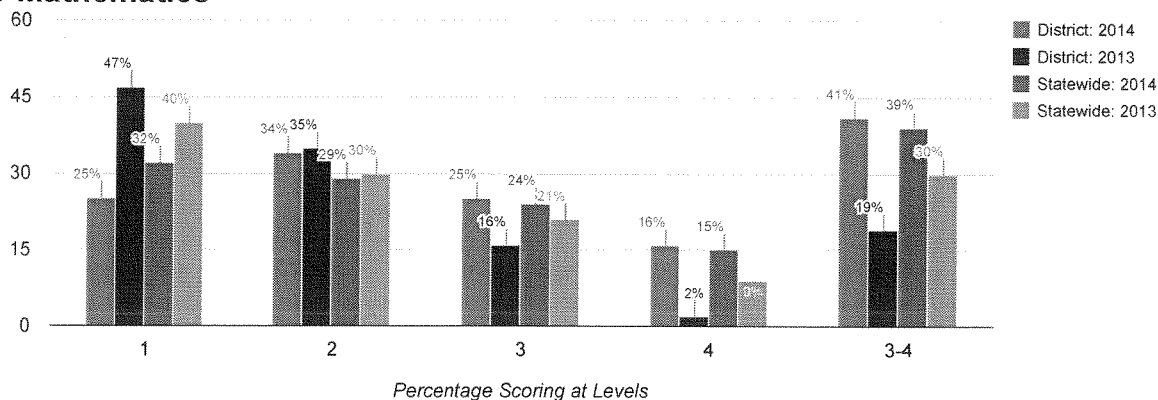
312

Results by Student Group

2014

2013

Total Tested	Percent Scoring at Level(s)				% Proficient (Levels 3 and 4)	Total Tested	Percent Scoring at Level(s)				% Proficient (Levels 3 and 4)
	1	2	3	4			1	2	3	4	
33	33	30	30	6	36	29	3	55	21	21	41
26	19	35	38	8	46	24	0	50	25	25	50
7	86	14	0	0	0	5	20	80	0	0	0
0	0	0	0	0	0	1	—	—	—	—	—
0	0	0	0	0	0	1	—	—	—	—	—
2	—	—	—	—	—	0	0	0	0	0	0
2	—	—	—	—	—	1	—	—	—	—	—
26	27	27	38	8	46	26	—	—	—	—	—
3	—	—	—	—	—	0	0	0	0	0	0
7	57	43	0	0	0	29	3	55	21	21	41
17	24	24	41	12	53	16	6	56	19	19	38
16	44	38	19	0	19	13	0	54	23	23	46
32	—	—	—	—	—	29	3	55	21	21	41
1	—	—	—	—	—	0	0	0	0	0	0
19	53	26	16	5	21	10	0	60	20	20	40
14	7	36	50	7	57	19	5	53	21	21	42
1	—	—	—	—	—	0	0	0	0	0	0
32	—	—	—	—	—	29	3	55	21	21	41

Grade 5 Mathematics**Mean Score**

2014

2013

308

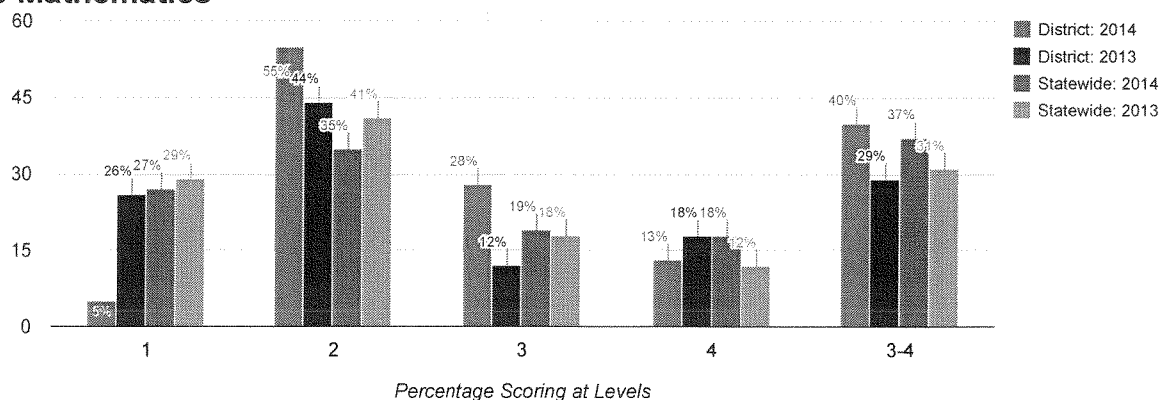
297

Results by Student Group

2014

2013

Total Tested	Percent Scoring at Level(s)				% Proficient (Levels 3 and 4)	Total Tested	Percent Scoring at Level(s)				% Proficient (Levels 3 and 4)
	1	2	3	4			1	2	3	4	
32	25	34	25	16	41	43	47	35	16	2	19
27	11	41	30	19	48	40	—	—	—	—	—
5	100	0	0	0	0	3	—	—	—	—	—
1	—	—	—	—	—	1	—	—	—	—	—
1	—	—	—	—	—	0	0	0	0	0	0
2	—	—	—	—	—	2	—	—	—	—	—
28	—	—	—	—	—	39	—	—	—	—	—
0	0	0	0	0	0	1	—	—	—	—	—
32	25	34	25	16	41	43	47	35	16	2	19
19	26	42	11	21	32	20	60	20	15	5	20
13	23	23	46	8	54	23	35	48	17	0	17
32	25	34	25	16	41	43	47	35	16	2	19
16	25	44	25	6	31	16	63	31	6	0	6
16	25	25	25	25	50	27	37	37	22	4	26
32	25	34	25	16	41	43	47	35	16	2	19

Grade 6 Mathematics**Mean Score**

2014

2013

314

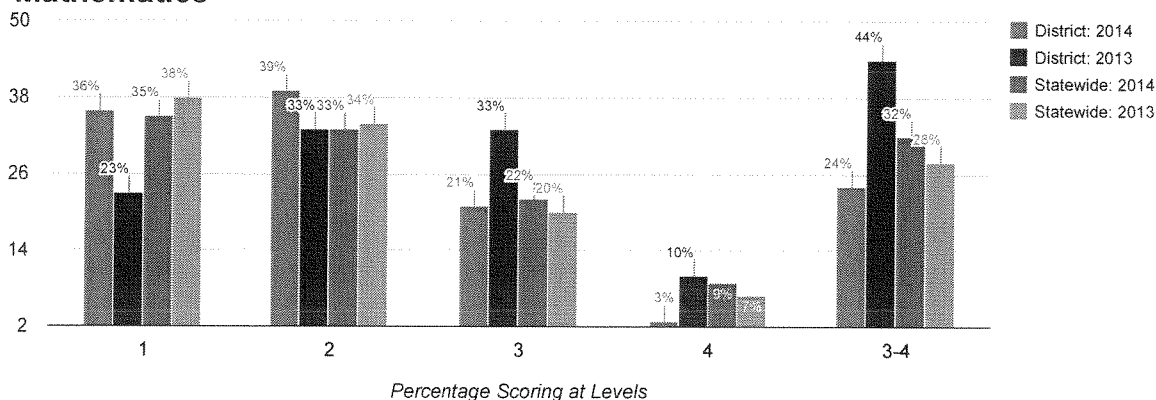
305

Results by Student Group

2014

2013

	Total Tested	Percent Scoring at Level(s)				% Proficient (Levels 3 and 4)	Total Tested	Percent Scoring at Level(s)				% Proficient (Levels 3 and 4)
		1	2	3	4			1	2	3	4	
All Students	40	5	55	28	13	40	34	26	44	12	18	29
General Education	37	—	—	—	—	—	28	14	50	14	21	36
Students with Disabilities	3	—	—	—	—	—	6	83	17	0	0	0
American Indian or Alaska Native	1	—	—	—	—	—	0	0	0	0	0	0
Black or African American	0	0	0	0	0	0	1	—	—	—	—	—
Hispanic or Latino	3	—	—	—	—	—	4	—	—	—	—	—
White	34	3	53	29	15	44	29	28	41	14	17	31
Multiracial	2	—	—	—	—	—	0	0	0	0	0	0
Small Group Total	6	17	67	17	0	17	5	20	60	0	20	20
Female	17	6	41	35	18	53	18	17	44	17	22	39
Male	23	4	65	22	9	30	16	38	44	6	13	19
English Proficient	40	5	55	28	13	40	34	26	44	12	18	29
Economically Disadvantaged	18	11	56	33	0	33	19	26	47	11	16	26
Not Economically Disadvantaged	22	0	55	23	23	45	15	27	40	13	20	33
Not Migrant	40	5	55	28	13	40	34	26	44	12	18	29

Grade 7 Mathematics**Mean Score**

2014

2013

297

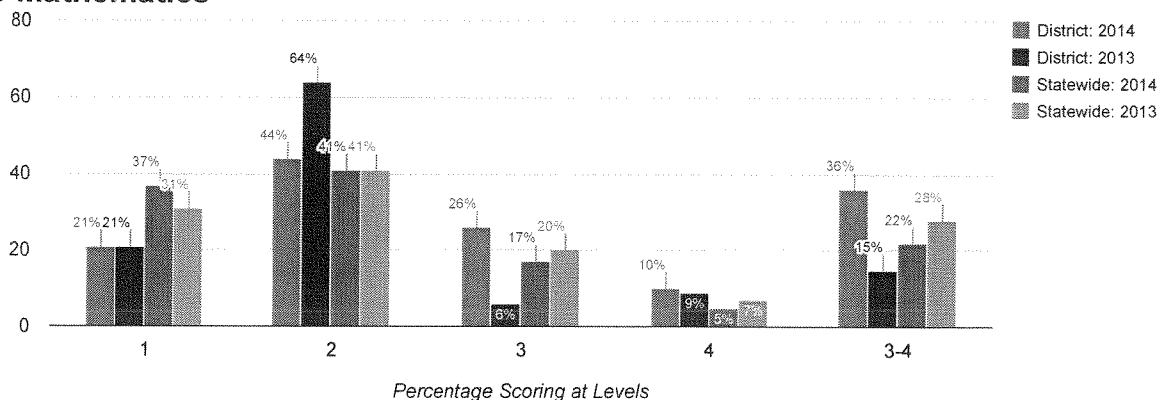
310

Results by Student Group

2014

2013

Total Tested	Percent Scoring at Level(s)				% Proficient (Levels 3 and 4)	Total Tested	Percent Scoring at Level(s)				% Proficient (Levels 3 and 4)
	1	2	3	4			1	2	3	4	
33	36	39	21	3	24	39	23	33	33	10	44
27	26	44	26	4	30	37	—	—	—	—	—
6	83	17	0	0	0	2	—	—	—	—	—
2	—	—	—	—	—	0	0	0	0	0	0
3	—	—	—	—	—	2	—	—	—	—	—
27	37	41	19	4	22	36	—	—	—	—	—
1	—	—	—	—	—	1	—	—	—	—	—
6	33	33	33	0	33	39	23	33	33	10	44
17	18	53	24	6	29	22	18	32	36	14	50
16	56	25	19	0	19	17	29	35	29	6	35
33	36	39	21	3	24	39	23	33	33	10	44
21	38	48	14	0	14	16	38	31	25	6	31
12	33	25	33	8	42	23	13	35	39	13	52
33	36	39	21	3	24	39	23	33	33	10	44

Grade 8 Mathematics**Mean Score**

2014

2013

310

302

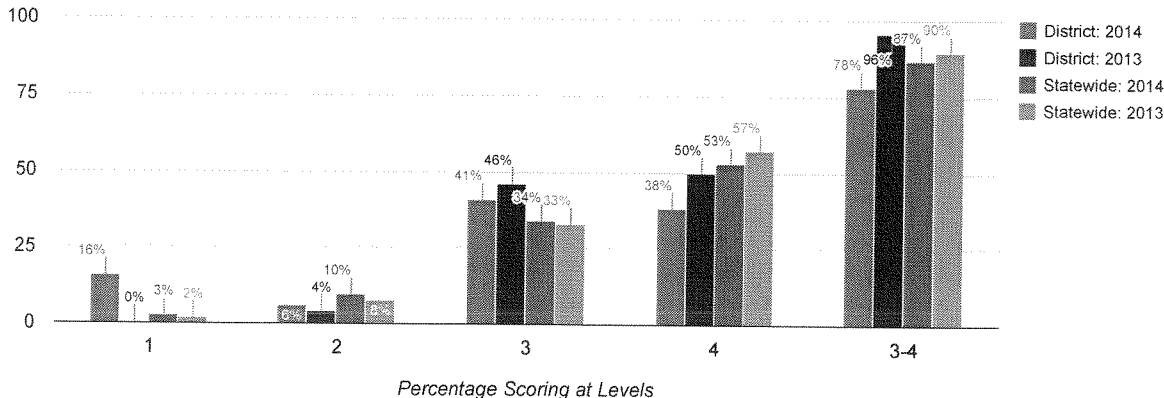
Results by Student Group

2014

2013

Total Tested	Percent Scoring at Level(s)				% Proficient (Levels 3 and 4)	Total Tested	Percent Scoring at Level(s)				% Proficient (Levels 3 and 4)
	1	2	3	4			1	2	3	4	
39	21	44	26	10	36	33	21	64	6	9	15
37	—	—	—	—	—	30	—	—	—	—	—
2	—	—	—	—	—	3	—	—	—	—	—
2	—	—	—	—	—	2	—	—	—	—	—
37	—	—	—	—	—	31	—	—	—	—	—
39	21	44	26	10	36	33	21	64	6	9	15
23	17	43	22	17	39	12	33	67	0	0	0
16	25	44	31	0	31	21	14	62	10	14	24
39	21	44	26	10	36	33	21	64	6	9	15
19	32	42	21	5	26	14	43	43	14	0	14
20	10	45	30	15	45	19	5	79	0	16	16
39	21	44	26	10	36	33	21	64	6	9	15

Grade 4 Science



Mean Score

2014

2013

74

85

Results by Student Group

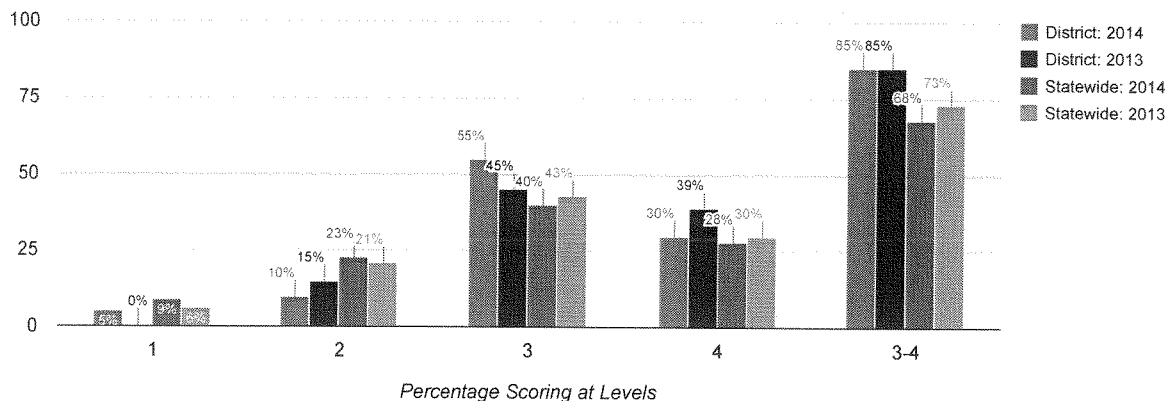
2014

2013

Total Tested	Percent Scoring at Level(s)				% Proficient (Levels 3 and 4)	Total Tested	Percent Scoring at Level(s)				% Proficient (Levels 3 and 4)
	1	2	3	4			1	2	3	4	
32	16	6	41	38	78	28	0	4	46	50	96
25	12	0	44	44	88	23	0	0	39	61	100
7	29	29	29	14	43	5	0	20	80	0	80
0	0	0	0	0	0	1	—	—	—	—	—
0	0	0	0	0	0	1	—	—	—	—	—
2	—	—	—	—	—	0	0	0	0	0	0
2	—	—	—	—	—	1	—	—	—	—	—
25	8	4	40	48	88	25	—	—	—	—	—
3	—	—	—	—	—	0	0	0	0	0	0
7	43	14	43	0	43	28	0	4	46	50	96
16	13	13	31	44	75	16	0	6	56	38	94
16	19	0	50	31	81	12	0	0	33	67	100
31	—	—	—	—	—	28	0	4	46	50	96
1	—	—	—	—	—	0	0	0	0	0	0
18	22	6	56	17	72	9	0	0	33	67	100
14	7	7	21	64	86	19	0	5	53	42	95
1	—	—	—	—	—	0	0	0	0	0	0
31	—	—	—	—	—	28	0	4	46	50	96

Grade 8 Science

Data in the bar charts include those for grade 8 students who took the New York State Grade 8 Science Test and grade 8 students who took a Regents science test in lieu of this test. Mean scores and data in the table for grade 8 science include only those for grade 8 students who took the New York State Grade 8 Science Test.



Mean Score

2014	2013
68	73

Results by Student Group	2014						2013					
	Total Tested	Percent Scoring at Level(s)				% Proficient (Levels 3 and 4)	Total Tested	Percent Scoring at Level(s)				% Proficient (Levels 3 and 4)
		1	2	3	4			1	2	3	4	
All Students	26	8	15	73	4	77	21	0	24	62	14	76
General Education	23	—	—	—	—	—	18	—	—	—	—	—
Students with Disabilities	3	—	—	—	—	—	3	—	—	—	—	—
Hispanic or Latino	1	—	—	—	—	—	2	—	—	—	—	—
White	25	—	—	—	—	—	19	—	—	—	—	—
Small Group Total	26	8	15	73	4	77	21	0	24	62	14	76
Female	14	7	14	79	0	79	9	0	33	56	11	67
Male	12	8	17	67	8	75	12	0	17	67	17	83
English Proficient	26	8	15	73	4	77	21	0	24	62	14	76
Economically Disadvantaged	15	0	27	67	7	73	13	0	38	46	15	62
Not Economically Disadvantaged	11	18	0	82	0	82	8	0	0	88	13	100
Not Migrant	26	8	15	73	4	77	21	0	24	62	14	76

Grade 8 Students Taking a Regents Science Test

Accelerated grade 8 students who take a Regents science test in lieu of the New York State Grade 8 Science Test.

Results by Student Group

Results by Student Group		2014					2013						
		Total Tested	Percent Scoring at Level(s)				% Proficient (Levels 3 and 4)	Total Tested	Percent Scoring at Level(s)				% Proficient (Levels 3 and 4)
		1	2	3	4		1	2	3	4			
All Students		14	0	0	21	79	100	12	0	0	17	83	100

Statewide Results on the National Assessment of Educational Progress: NAEP (2012 - 13)

NAEP Grade 4 Reading

	% Below Basic	% Basic	% Proficient	% Advanced
All Students	30	33	28	9
American Indian or Alaska Native	*	*	*	*
Asian or Native Hawaiian/Other Pacific Islander	19	27	36	18
Black or African American	45	34	18	3
Hispanic or Latino	44	35	17	4
White	20	33	35	12
Multiracial	*	*	*	*
Students with Disabilities	69	22	7	2
Limited English Proficient	75	21	4	*
Economically Disadvantaged	43	34	19	4

NAEP Grade 4 Mathematics

	% Below Basic	% Basic	% Proficient	% Advanced
All Students	18	42	33	7
American Indian or Alaska Native	*	*	*	*
Asian or Native Hawaiian/Other Pacific Islander	6	25	48	21
Black or African American	33	50	16	1
Hispanic or Latino	27	49	22	2
White	9	41	42	8
Multiracial	*	*	*	*
Students with Disabilities	43	42	14	1
Limited English Proficient	54	36	10	*
Economically Disadvantaged	26	48	23	3

*Reporting standards not met.

Statewide Results on the National Assessment of Educational Progress: NAEP (2012 - 13)

NAEP Grade 8 Reading

	% Below Basic	% Basic	% Proficient	% Advanced
All Students	24	41	30	5
American Indian or Alaska Native	*	*	*	*
Asian or Native Hawaiian/Other Pacific Islander	17	33	38	12
Black or African American	37	45	17	1
Hispanic or Latino	36	45	18	1
White	14	40	40	6
Multiracial	*	*	*	*
Students with Disabilities	56	36	8	*
Limited English Proficient	80	19	1	*
Economically Disadvantaged	35	44	20	1

NAEP Grade 8 Mathematics

	% Below Basic	% Basic	% Proficient	% Advanced
All Students	28	40	24	8
American Indian or Alaska Native	*	*	*	*
Asian or Native Hawaiian/Other Pacific Islander	14	27	33	26
Black or African American	50	38	11	1
Hispanic or Latino	44	42	12	2
White	15	41	34	10
Multiracial	*	*	*	*
Students with Disabilities	66	27	6	1
Limited English Proficient	75	21	3	1
Economically Disadvantaged	42	39	15	4

*Reporting standards not met.

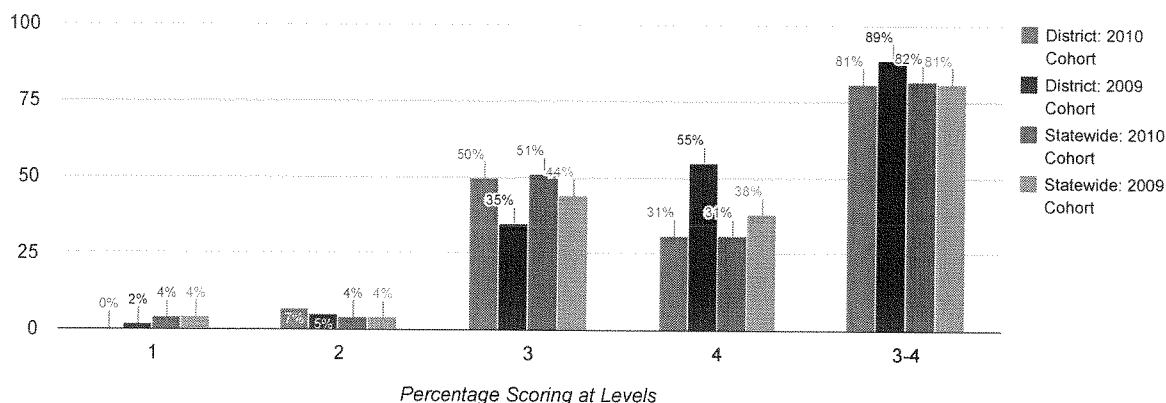
Statewide Results on the National Assessment of Educational Progress: NAEP (2012 - 13)

NAEP Participation Rates

Grade 4 Reading	Participation Rate
Students with Disabilities	94
Limited English Proficient	93
Grade 4 Mathematics	Participation Rate
Students with Disabilities	94
Limited English Proficient	93
Grade 8 Reading	Participation Rate
Students with Disabilities	97
Limited English Proficient	91
Grade 8 Mathematics	Participation Rate
Students with Disabilities	89
Limited English Proficient	94

Total Cohort Results in Secondary-Level English Language Arts after Four Years of Instruction

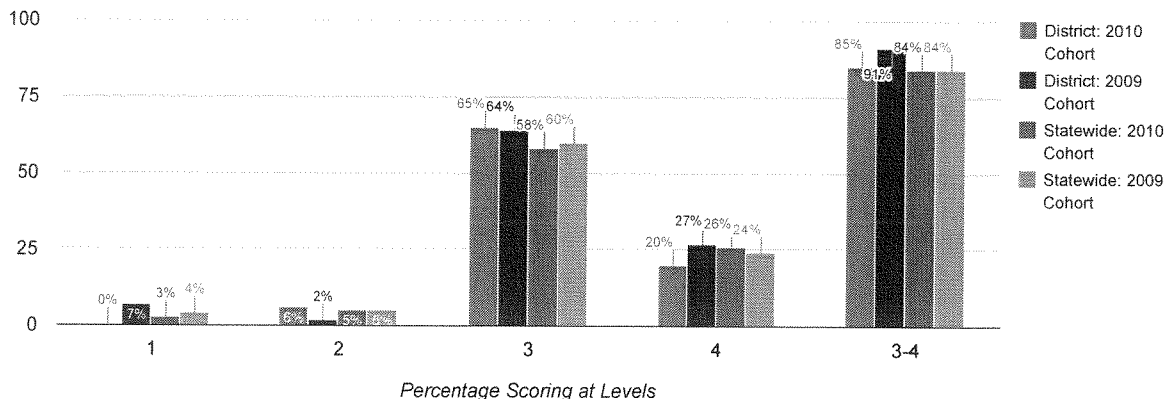
Total cohort results are those for New York State Regents and alternatives to Regents examinations only.



Results by Student Group	2010 Cohort						2009 Cohort					
	Number of Students	Percent Scoring at Level(s)				% Proficient (Levels 3 & above)	Number of Students	Percent Scoring at Level(s)				% Proficient (Levels 3 and 4)
		1	2	3	4 & above			1	2	3	4	
All Students	54	0	7	50	31	81	55	2	5	35	55	89
General Education	45	0	2	51	38	89	47	0	2	32	64	96
Students with Disabilities	9	0	33	44	0	44	8	13	25	50	0	50
Black or African American	0	0	0	0	0	0	1	—	—	—	—	—
Hispanic or Latino	3	—	—	—	—	—	2	—	—	—	—	—
White	50	—	—	—	—	—	51	—	—	—	—	—
Multiracial	1	—	—	—	—	—	1	—	—	—	—	—
Small Group Total	54	0	7	50	31	81	55	2	5	35	55	89
Female	24	0	0	42	50	92	31	0	6	19	68	87
Male	30	0	13	57	17	73	24	4	4	54	38	92
English Proficient	54	0	7	50	31	81	55	2	5	35	55	89
Economically Disadvantaged	18	0	6	61	22	83	22	0	9	59	23	82
Not Economically Disadvantaged	36	0	8	44	36	81	33	3	3	18	76	94
Not Migrant	54	0	7	50	31	81	55	2	5	35	55	89

Total Cohort Results in Secondary-Level Mathematics after Four Years of Instruction

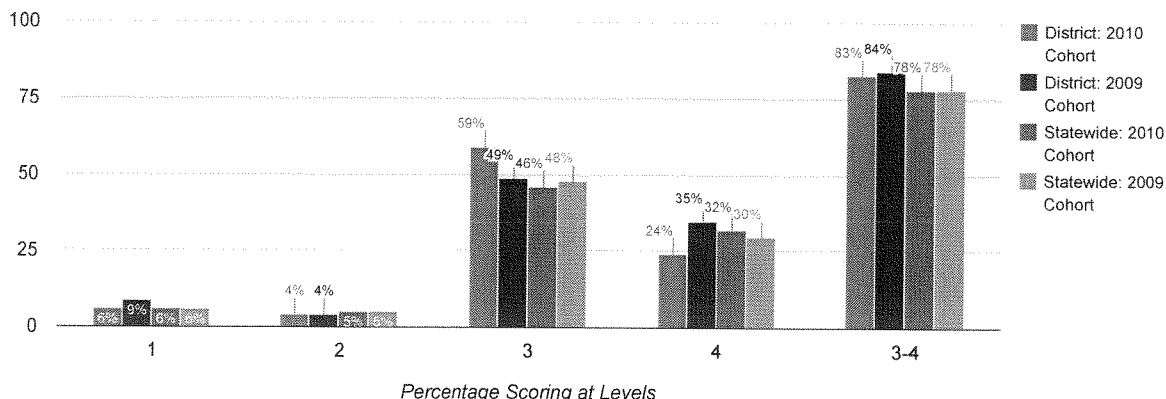
Total cohort results are those for New York State Regents and alternatives to Regents examinations only.



Results by Student Group	2010 Cohort						2009 Cohort					
	Number of Students	Percent Scoring at Level(s)				% Proficient (Levels 3 & above)	Number of Students	Percent Scoring at Level(s)				% Proficient (Levels 3 and 4)
		1	2	3	4 & above			1	2	3	4	
All Students	54	0	6	65	20	85	55	7	2	64	27	91
General Education	45	0	4	64	24	89	47	0	0	68	32	100
Students with Disabilities	9	0	11	67	0	67	8	50	13	38	0	38
Black or African American	0	0	0	0	0	0	1	—	—	—	—	—
Hispanic or Latino	3	—	—	—	—	—	2	—	—	—	—	—
White	50	—	—	—	—	—	51	—	—	—	—	—
Multiracial	1	—	—	—	—	—	1	—	—	—	—	—
Small Group Total	54	0	6	65	20	85	55	7	2	64	27	91
Female	24	0	4	71	21	92	31	6	3	65	26	90
Male	30	0	7	60	20	80	24	8	0	63	29	92
English Proficient	54	0	6	65	20	85	55	7	2	64	27	91
Economically Disadvantaged	18	0	0	83	6	89	22	9	5	68	18	86
Not Economically Disadvantaged	36	0	8	56	28	83	33	6	0	61	33	94
Not Migrant	54	0	6	65	20	85	55	7	2	64	27	91

Total Cohort Results in Secondary-Level Global History and Geography after Four Years of Instruction

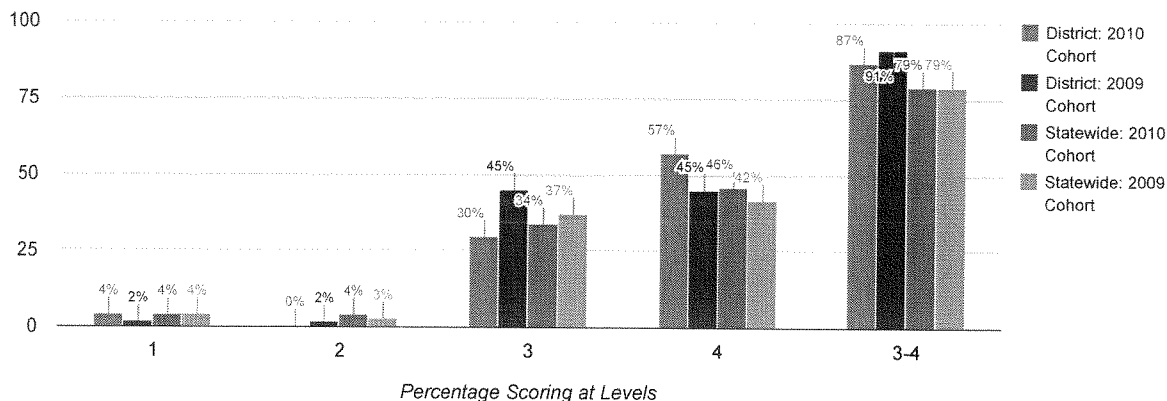
Total cohort results are those for New York State Regents and alternatives to Regents examinations only.



Results by Student Group	2010 Cohort						2009 Cohort					
	Number of Students	Percent Scoring at Level(s)				% Proficient (Levels 3 and 4)	Number of Students	Percent Scoring at Level(s)				% Proficient (Levels 3 and 4)
		1	2	3	4			1	2	3	4	
All Students	54	6	4	59	24	83	55	9	4	49	35	84
General Education	45	0	4	62	27	89	47	2	2	55	40	96
Students with Disabilities	9	33	0	44	11	56	8	50	13	13	0	13
Black or African American	0	0	0	0	0	0	1	—	—	—	—	—
Hispanic or Latino	3	—	—	—	—	—	2	—	—	—	—	—
White	50	—	—	—	—	—	51	—	—	—	—	—
Multiracial	1	—	—	—	—	—	1	—	—	—	—	—
Small Group Total	54	6	4	59	24	83	55	9	4	49	35	84
Female	24	0	4	75	17	92	31	13	0	42	39	81
Male	30	10	3	47	30	77	24	4	8	58	29	88
English Proficient	54	6	4	59	24	83	55	9	4	49	35	84
Economically Disadvantaged	18	0	6	78	17	94	22	14	5	59	14	73
Not Economically Disadvantaged	36	8	3	50	28	78	33	6	3	42	48	91
Not Migrant	54	6	4	59	24	83	55	9	4	49	35	84

Total Cohort Results in Secondary-Level U.S. History and Government after Four Years of Instruction

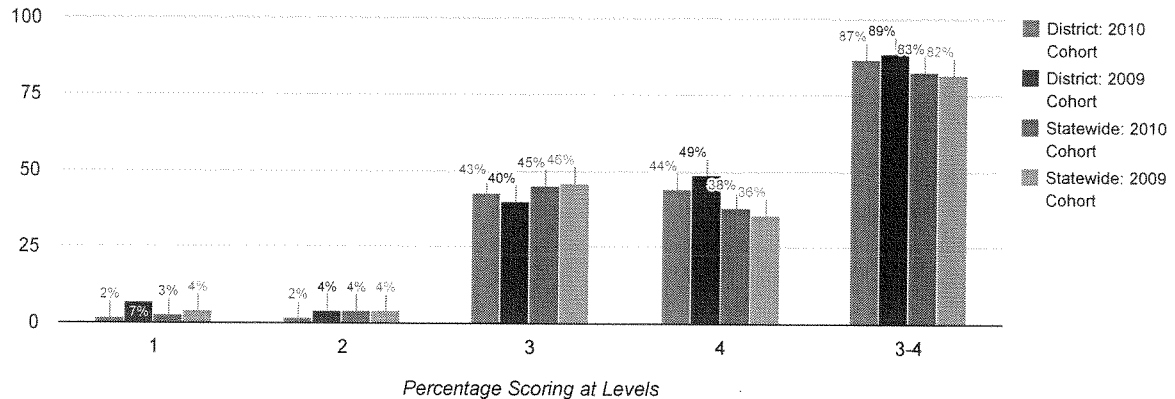
Total cohort results are those for New York State Regents and alternatives to Regents examinations only.



Results by Student Group	2010 Cohort						2009 Cohort					
	Number of Students	Percent Scoring at Level(s)				% Proficient (Levels 3 and 4)	Number of Students	Percent Scoring at Level(s)				% Proficient (Levels 3 and 4)
		1	2	3	4			1	2	3	4	
All Students	54	4	0	30	57	87	55	2	2	45	45	91
General Education	45	0	0	22	69	91	47	0	0	45	51	96
Students with Disabilities	9	22	0	67	0	67	8	13	13	50	13	63
Black or African American	0	0	0	0	0	0	1	—	—	—	—	—
Hispanic or Latino	3	—	—	—	—	—	2	—	—	—	—	—
White	50	—	—	—	—	—	51	—	—	—	—	—
Multiracial	1	—	—	—	—	—	1	—	—	—	—	—
Small Group Total	54	4	0	30	57	87	55	2	2	45	45	91
Female	24	0	0	33	58	92	31	3	0	48	39	87
Male	30	7	0	27	57	83	24	0	4	42	54	96
English Proficient	54	4	0	30	57	87	55	2	2	45	45	91
Economically Disadvantaged	18	0	0	44	50	94	22	0	0	68	18	86
Not Economically Disadvantaged	36	6	0	22	61	83	33	3	3	30	64	94
Not Migrant	54	4	0	30	57	87	55	2	2	45	45	91

Total Cohort Results in Secondary-Level Science after Four Years of Instruction

Total cohort results are those for New York State Regents and alternatives to Regents examinations only.



Results by Student Group	2010 Cohort						2009 Cohort					
	Number of Students	Percent Scoring at Level(s)				% Proficient (Levels 3 and 4)	Number of Students	Percent Scoring at Level(s)				% Proficient (Levels 3 and 4)
		1	2	3	4			1	2	3	4	
All Students	54	2	2	43	44	87	55	7	4	40	49	89
General Education	45	2	2	36	53	89	47	0	2	43	55	98
Students with Disabilities	9	0	0	78	0	78	8	50	13	25	13	38
Black or African American	0	0	0	0	0	0	1	—	—	—	—	—
Hispanic or Latino	3	—	—	—	—	—	2	—	—	—	—	—
White	50	—	—	—	—	—	51	—	—	—	—	—
Multiracial	1	—	—	—	—	—	1	—	—	—	—	—
Small Group Total	54	2	2	43	44	87	55	7	4	40	49	89
Female	24	0	0	50	42	92	31	10	3	45	42	87
Male	30	3	3	37	47	83	24	4	4	33	58	92
English Proficient	54	2	2	43	44	87	55	7	4	40	49	89
Economically Disadvantaged	18	0	0	67	22	89	22	9	5	55	32	86
Not Economically Disadvantaged	36	3	3	31	56	86	33	6	3	30	61	91
Not Migrant	54	2	2	43	44	87	55	7	4	40	49	89

Regents Examination Results (2013 - 14)

Results by Student Group	Comprehensive English				Integrated Algebra			
	Total Tested	Percent of students scoring at or above			Total Tested	Percent of students scoring at or above		
		55	65	85		55	65	85
All Students	43	95	91	40	45	91	76	7
General Education	38	97	97	45	34	94	82	9
Students with Disabilities	5	80	40	0	11	82	55	0
Black or African American	1	—	—	—	2	—	—	—
Hispanic or Latino	3	—	—	—	2	—	—	—
White	39	—	—	—	40	93	80	8
Multiracial	0	0	0	0	1	—	—	—
Small Group Total	43	95	91	40	5	80	40	0
Female	20	95	95	55	14	93	71	0
Male	23	96	87	26	31	90	77	10
English Proficient	43	95	91	40	44	—	—	—
Limited English Proficient	0	0	0	0	1	—	—	—
Economically Disadvantaged	25	92	84	36	23	87	70	0
Not Economically Disadvantaged	18	100	100	44	22	95	82	14
Migrant	0	0	0	0	1	—	—	—
Not Migrant	43	95	91	40	44	—	—	—

Regents Examination Results (2013 - 14)

Results by Student Group	English Language Arts (Common Core)						Algebra I (Common Core)					
	Total Tested	Percent of students scoring at					Total Tested	Percent of students scoring at				
		Level 1	Level 2	Level 3	Level 4	Level 5		Level 1	Level 2	Level 3	Level 4	Level 5
All Students	1	—	—	—	—	—	18	6	6	50	33	6
General Education	0	0	0	0	0	0	17	—	—	—	—	—
Students with Disabilities	1	—	—	—	—	—	1	—	—	—	—	—
Black or African American	1	—	—	—	—	—	1	—	—	—	—	—
Hispanic or Latino	0	0	0	0	0	0	1	—	—	—	—	—
White	0	0	0	0	0	0	16	—	—	—	—	—
Multiracial	0	0	0	0	0	0	0	0	0	0	0	0
Small Group Total	1	—	—	—	—	—	18	6	6	50	33	6
Female	0	0	0	0	0	0	5	0	20	60	20	0
Male	1	—	—	—	—	—	13	8	0	46	38	8
English Proficient	1	—	—	—	—	—	18	6	6	50	33	6
Limited English Proficient	0	0	0	0	0	0	0	0	0	0	0	0
Economically Disadvantaged	1	—	—	—	—	—	4	—	—	—	—	—
Not Economically Disadvantaged	0	0	0	0	0	0	14	—	—	—	—	—
Migrant	0	0	0	0	0	0	0	0	0	0	0	0
Not Migrant	1	—	—	—	—	—	18	6	6	50	33	6

Regents Examination Results (2013 - 14)

Results by Student Group	Geometry				Algebra 2/Trigonometry			
	Total Tested	Percent of students scoring at or above			Total Tested	Percent of students scoring at or above		
		55	65	85		55	65	85
All Students	37	89	65	16	17	76	65	24
General Education	36	—	—	—	17	76	65	24
Students with Disabilities	1	—	—	—	0	0	0	0
Black or African American	1	—	—	—	0	0	0	0
Hispanic or Latino	0	0	0	0	3	—	—	—
White	35	—	—	—	14	—	—	—
Multiracial	1	—	—	—	0	0	0	0
Small Group Total	37	89	65	16	17	76	65	24
Female	19	95	74	21	6	83	67	33
Male	18	83	56	11	11	73	64	18
English Proficient	37	89	65	16	17	76	65	24
Limited English Proficient	0	0	0	0	0	0	0	0
Economically Disadvantaged	16	81	44	6	6	83	67	17
Not Economically Disadvantaged	21	95	81	24	11	73	64	27
Migrant	0	0	0	0	0	0	0	0
Not Migrant	37	89	65	16	17	76	65	24

Regents Examination Results (2013 - 14)

Results by Student Group	Global History and Geography				U.S. History & Government			
	Total Tested	Percent of students scoring at or above			Total Tested	Percent of students scoring at or above		
		55	65	85		55	65	85
All Students	61	80	69	23	42	93	90	62
General Education	51	82	69	25	37	100	100	68
Students with Disabilities	10	70	70	10	5	40	20	20
Black or African American	1	—	—	—	1	—	—	—
Hispanic or Latino	2	—	—	—	3	—	—	—
White	56	84	75	25	38	—	—	—
Multiracial	2	—	—	—	0	0	0	0
Small Group Total	5	40	0	0	42	93	90	62
Female	28	75	61	25	20	95	95	60
Male	33	85	76	21	22	91	86	64
English Proficient	60	—	—	—	42	93	90	62
Limited English Proficient	1	—	—	—	0	0	0	0
Economically Disadvantaged	36	72	58	19	23	96	91	52
Not Economically Disadvantaged	25	92	84	28	19	89	89	74
Migrant	1	—	—	—	0	0	0	0
Not Migrant	60	—	—	—	42	93	90	62

Regents Examination Results (2013 - 14)

Results by Student Group	Living Environment				Physical Setting/Earth Science			
	Total Tested	Percent of students scoring at or above			Total Tested	Percent of students scoring at or above		
		55	65	85		55	65	85
All Students	38	92	87	21	57	95	84	35
General Education	35	—	—	—	49	98	88	39
Students with Disabilities	3	—	—	—	8	75	63	13
Black or African American	0	0	0	0	1	—	—	—
Hispanic or Latino	2	—	—	—	2	—	—	—
White	35	—	—	—	52	96	87	37
Multiracial	1	—	—	—	2	—	—	—
Small Group Total	38	92	87	21	5	80	60	20
Female	16	94	88	13	24	100	92	33
Male	22	91	86	27	33	91	79	36
English Proficient	38	92	87	21	57	95	84	35
Limited English Proficient	0	0	0	0	0	0	0	0
Economically Disadvantaged	16	88	81	13	29	93	76	17
Not Economically Disadvantaged	22	95	91	27	28	96	93	54
Migrant	0	0	0	0	0	0	0	0
Not Migrant	38	92	87	21	57	95	84	35

Regents Examination Results (2013 - 14)

Results by Student Group	Physical Setting/Chemistry				Physical Setting/Physics			
	Total Tested	Percent of students scoring at or above			Total Tested	Percent of students scoring at or above		
		55	65	85		55	65	85
All Students	19	100	79	11	13	85	69	23
General Education	19	100	79	11	13	85	69	23
Students with Disabilities	0	0	0	0	0	0	0	0
Black or African American	0	0	0	0	0	0	0	0
Hispanic or Latino	0	0	0	0	1	—	—	—
White	19	100	79	11	12	—	—	—
Multiracial	0	0	0	0	0	0	0	0
Small Group Total	0	0	0	0	13	85	69	23
Female	13	100	77	15	6	83	67	33
Male	6	100	83	0	7	86	71	14
English Proficient	19	100	79	11	13	85	69	23
Limited English Proficient	0	0	0	0	0	0	0	0
Economically Disadvantaged	7	100	86	14	6	83	83	33
Not Economically Disadvantaged	12	100	75	8	7	86	57	14
Migrant	0	0	0	0	0	0	0	0
Not Migrant	19	100	79	11	13	85	69	23

Regents Competency Test Results (2013 - 14)

Results by Student Group	Reading		Writing		Math	
	Total Tested	Percent Passing	Total Tested	Percent Passing	Total Tested	Percent Passing
All Students	0	0	0	0	0	0
Students with Disabilities	0	0	0	0	0	0
White	0	0	0	0	0	0
Small Group Total	0	0	0	0	0	0
Male	0	0	0	0	0	0
English Proficient	0	0	0	0	0	0
Not Economically Disadvantaged	0	0	0	0	0	0
Not Migrant	0	0	0	0	0	0

Regents Competency Test Results (2013 - 14)

Results by Student Group	Global Studies		U.S. History & Government		Science	
	Total Tested	Percent Passing	Total Tested	Percent Passing	Total Tested	Percent Passing
All Students	0	0	2	—	0	0
Students with Disabilities	0	0	2	—	0	0
White	0	0	2	—	0	0
Small Group Total	0	0	2	—	0	0
Male	0	0	2	—	0	0
English Proficient	0	0	2	—	0	0
Not Economically Disadvantaged	0	0	2	—	0	0
Not Migrant	0	0	2	—	0	0

New York State Alternate Assessment (NYSAA) Results (2013 - 14)

Grade/Subject	Total Tested	Number Scoring at Level(s)				% Proficient (Levels 3 and 4)
		1	2	3	4	
Grade 3 ELA	1	—	—	—	—	—
Grade 3 Math	1	—	—	—	—	—
Grade 8 ELA	2	—	—	—	—	—
Grade 8 Math	2	—	—	—	—	—
Grade 8 Science	2	—	—	—	—	—
Secondary-Level ELA	1	—	—	—	—	—
Secondary-Level Math	1	—	—	—	—	—
Secondary-Level Science	1	—	—	—	—	—
Secondary-Level Social Studies	1	—	—	—	—	—

New York State English as a Second Language Achievement Test (NYSESLAT) Results (2013 - 14)

Grade 1	Total Tested	Percent of Students Scoring at Level(s)			
		Beginning	Intermediate	Advanced	Proficient
All Students	1	—	—	—	—
General Education	1	—	—	—	—
Grade 4	Total Tested	Percent of Students Scoring at Level(s)			
		Beginning	Intermediate	Advanced	Proficient
All Students	1	—	—	—	—
Students with Disabilities	1	—	—	—	—
Grade 10	Total Tested	Percent of Students Scoring at Level(s)			
		Beginning	Intermediate	Advanced	Proficient
All Students	1	—	—	—	—
General Education	1	—	—	—	—

Elementary/Middle-Level English Language Arts Results for Accountability

All accountability groups made AYP: YES

Student Group	Made AYP	Tested 95%	Students Enrolled During the Test Administration Period	Percent of Enrolled Students with Valid Test Scores	PI >= EAMO or Safe Harbor Target	Tested Students Enrolled on BEDS Day	PI	EAMO	Safe Harbor Target
All Students	✓	✓	230	100%	✓	219	111	81	81
American Indian or Alaska Native	—	—	2	—	—	2	—	—	—
Black or African American	—	—	6	—	—	6	—	—	—
Hispanic or Latino	—	—	14	—	—	14	—	—	—
Asian or Native Hawaiian/Other Pacific Islander	—	—	1	—	—	1	—	—	—
White	✓	✓	200	100%	✓	189	114	101	101
Multiracial	—	—	7	—	—	7	—	—	—
Students With Disabilities	—	—	30	—	—	26	—	—	—
Limited English Proficient	—	—	0	—	—	0	—	—	—
Economically Disadvantaged	✓	✓	119	99%	✓	110	90	65	65

Results for the following groups are NOT used to determine AYP.

Student Group	Students Enrolled During the Test Administration Period	Percent of Enrolled Students with Valid Test Scores	Tested Students Enrolled on BEDS Day	PI
Not American Indian or Alaska Native	228	100%	217	111
Not Black or African American	224	100%	213	110
Not Hispanic or Latino	216	100%	205	112
Not Asian or Native Hawaiian/Other Pacific Islander	229	100%	218	110
Not White	30	—	30	90
Not Multiracial	223	100%	212	112
General Education	200	100%	193	121
English Proficient	230	100%	219	111
Not Economically Disadvantaged	111	100%	109	131
Male	111	99%	107	93
Female	119	100%	112	128
Migrant	0	—	0	—
Not Migrant	230	100%	219	111

✓ Yes

✗ No

— There were fewer than 40 students enrolled during the test administration period, so the Percent of Enrolled Students with Valid Test Scores data are suppressed OR there were fewer than 30 tested students enrolled on BEDS day and during the test administration period, so the PI, EAMO, and Safe Harbor Target data are suppressed.

Elementary/Middle-Level Mathematics Results for Accountability

All accountability groups made AYP: YES

Student Group	Made AYP	Tested 95%	Students Enrolled During the Test Administration Period	Percent of Enrolled Students with Valid Test Scores	PI >= EAMO or Safe Harbor Target	Tested Students Enrolled on BEDS Day	PI	EAMO	Safe Harbor Target
All Students	✓	✓	231	97%	✓	215	117	78	78
American Indian or Alaska Native	—	—	2	—	—	2	—	—	—
Black or African American	—	—	6	—	—	6	—	—	—
Hispanic or Latino	—	—	15	—	—	13	—	—	—
Asian or Native Hawaiian/Other Pacific Islander	—	—	1	—	—	1	—	—	—
White	✓	✓	200	98%	✓	186	123	97	97
Multiracial	—	—	7	—	—	7	—	—	—
Students With Disabilities	—	—	31	—	—	25	—	—	—
Limited English Proficient	—	—	1	—	—	0	—	—	—
Economically Disadvantaged	✓	✓	120	97%	✓	108	101	62	62

Results for the following groups are NOT used to determine AYP.

Student Group	Students Enrolled During the Test Administration Period	Percent of Enrolled Students with Valid Test Scores	Tested Students Enrolled on BEDS Day	PI
Not American Indian or Alaska Native	229	97%	213	118
Not Black or African American	225	97%	209	118
Not Hispanic or Latino	216	98%	202	119
Not Asian or Native Hawaiian/Other Pacific Islander	230	97%	214	117
Not White	31	—	29	—
Not Multiracial	224	97%	208	119
General Education	200	99%	190	128
English Proficient	230	97%	215	117
Not Economically Disadvantaged	111	98%	107	134
Male	112	96%	105	98
Female	119	98%	110	135
Migrant	1	—	0	—
Not Migrant	230	97%	215	117

✓ Yes

✗ No

— There were fewer than 40 students enrolled during the test administration period, so the Percent of Enrolled Students with Valid Test Scores data are suppressed OR there were fewer than 30 tested students enrolled on BEDS day and during the test administration period, so the PI, EAMO, and Safe Harbor Target data are suppressed.

Elementary/Middle-Level Science Results for Accountability

All accountability groups made AYP: YES

Student Group	Made AYP	Tested 80%	Students Enrolled During the Test Administration Period	Percent of Enrolled Students with Valid Test Scores	PI >= EAMO or Progress Target	Tested Students Enrolled on BEDS Day	PI	EAMO	Progress Target
All Students	✓	✓	77	96%	✓	69	177	171	171
American Indian or Alaska Native	—	—	0	—	—	0	—	—	—
Black or African American	—	—	2	—	—	2	—	—	—
Hispanic or Latino	—	—	4	—	—	3	—	—	—
Asian or Native Hawaiian/Other Pacific Islander	—	—	0	—	—	0	—	—	—
White	✓	✓	68	96%	✓	61	182	180	180
Multiracial	—	—	3	—	—	3	—	—	—
Students With Disabilities	—	—	13	—	—	10	—	—	—
Limited English Proficient	—	—	1	—	—	0	—	—	—
Economically Disadvantaged	✓	✓	40	95%	✓	34	179	157	1

Results for the following groups are NOT used to determine AYP.

Student Group	Students Enrolled During the Test Administration Period	Percent of Enrolled Students with Valid Test Scores	Tested Students Enrolled on BEDS Day	PI
Not American Indian or Alaska Native	77	96%	69	177
Not Black or African American	75	96%	67	176
Not Hispanic or Latino	73	96%	66	179
Not Asian or Native Hawaiian/Other Pacific Islander	77	96%	69	177
Not White	9	—	8	—
Not Multiracial	74	96%	66	180
General Education	64	97%	59	186
English Proficient	76	96%	69	177
Not Economically Disadvantaged	37	—	35	174
Male	34	—	31	171
Female	43	95%	38	182
Migrant	1	—	0	—
Not Migrant	76	96%	69	177

✓ Yes

✗ No

— There were fewer than 40 students enrolled during the test administration period, so the Percent of Enrolled Students with Valid Test Scores data are suppressed OR there were fewer than 30 tested students enrolled on BEDS day and during the test administration period, so the PI, EAMO, and Progress Target data are suppressed.

Secondary-Level English Language Arts Results for Accountability

All accountability groups made AYP: YES

Student Group	Made AYP	Tested 95%	12th Graders	Percent of 12th Graders with Valid Test Scores	PI >= EAMO or Safe Harbor Target	2010 Accountability Cohort Members	PI	EAMO	Safe Harbor Target
All Students	✓	✓	50	100%	✓	48	163	152	152
American Indian or Alaska Native	—	—	0	—	—	0	—	—	—
Black or African American	—	—	0	—	—	0	—	—	—
Hispanic or Latino	—	—	3	—	—	3	—	—	—
Asian or Native Hawaiian/Other Pacific Islander	—	—	0	—	—	0	—	—	—
White	✓	✓	46	100%	✓	44	164	163	163
Multiracial	—	—	1	—	—	1	—	—	—
Students With Disabilities	—	—	7	—	—	7	—	—	—
Limited English Proficient	—	—	0	—	—	0	—	—	—
Economically Disadvantaged	—	—	17	—	—	16	—	—	—

Results for the following groups are NOT used to determine AYP.

Student Group	12th Graders	Percent of 12th Graders with Valid Test Scores	2010 Accountability Cohort Members	PI
Not American Indian or Alaska Native	50	100%	48	163
Not Black or African American	50	100%	48	163
Not Hispanic or Latino	47	100%	45	162
Not Asian or Native Hawaiian/Other Pacific Islander	50	100%	48	163
Not White	4	—	4	—
Not Multiracial	49	100%	47	164
General Education	43	100%	41	180
English Proficient	50	100%	48	163
Not Economically Disadvantaged	33	—	32	169
Male	29	—	26	—
Female	21	—	22	—
Migrant	0	—	0	—
Not Migrant	50	100%	48	163

✓ Yes

✗ No

— There were fewer than 40 12th graders, so the Percent of 12th Graders with Valid Test Scores data are suppressed OR there were fewer than 30 students in the 2010 accountability cohort, so PI, EAMO, and Safe Harbor Target data are suppressed.

Secondary-Level Mathematics Results for Accountability

All accountability groups made AYP: NO

Student Group	Made AYP	Tested 95%	12th Graders	Percent of 12th Graders with Valid Test Scores	PI >= EAMO or Safe Harbor Target	2010 Accountability Cohort Members	PI	EAMO	Safe Harbor Target
All Students	✓	✓	50	100%	✓	48	142	134	134
American Indian or Alaska Native	—	—	0	—	—	0	—	—	—
Black or African American	—	—	0	—	—	0	—	—	—
Hispanic or Latino	—	—	3	—	—	3	—	—	—
Asian or Native Hawaiian/Other Pacific Islander	—	—	0	—	—	0	—	—	—
White	✗	✓	46	100%	✗	44	143	147	147
Multiracial	—	—	1	—	—	1	—	—	—
Students With Disabilities	—	—	7	—	—	7	—	—	—
Limited English Proficient	—	—	0	—	—	0	—	—	—
Economically Disadvantaged	—	—	17	—	—	16	—	—	—

Results for the following groups are NOT used to determine AYP.

Student Group	12th Graders	Percent of 12th Graders with Valid Test Scores	2010 Accountability Cohort Members	PI
Not American Indian or Alaska Native	50	100%	48	142
Not Black or African American	50	100%	48	142
Not Hispanic or Latino	47	100%	45	144
Not Asian or Native Hawaiian/Other Pacific Islander	50	100%	48	142
Not White	4	—	4	—
Not Multiracial	49	100%	47	140
General Education	43	100%	41	151
English Proficient	50	100%	48	142
Not Economically Disadvantaged	33	—	32	147
Male	29	—	26	—
Female	21	—	22	—
Migrant	0	—	0	—
Not Migrant	50	100%	48	142

✓ Yes

✗ No

— There were fewer than 40 12th graders, so the Percent of 12th Graders with Valid Test Scores data are suppressed OR there were fewer than 30 students in the 2010 accountability cohort, so PI, EAMO, and Safe Harbor Target data are suppressed.

Unweighted Combined ELA and Math PIs

Student Group	Elementary/ Middle-Level ELA PI	Elementary/ Middle-Level Math PI	Secondary-Level ELA PI	Secondary-Level Math PI	Unweighted Combined PI
All Students	111	117	163	142	133
American Indian or Alaska Native	—	—	—	—	—
Black or African American	—	—	—	—	—
Hispanic or Latino	—	—	—	—	—
Asian or Native Hawaiian/Other Pacific Islander	—	—	—	—	—
White	114	123	164	143	136
Multiracial	—	—	—	—	—
Students With Disabilities	—	—	—	—	—
Limited English Proficient	—	—	—	—	—
Economically Disadvantaged	90	101	—	—	96

— There were not enough students to determine a Performance Index.

Overall Graduation Rate for Accountability

All accountability groups made AYP: YES

Student Group	Made AYP
All Students	✓
American Indian or Alaska Native	—
Black or African American	—
Hispanic or Latino	—
Asian or Native Hawaiian/Other Pacific Islander	—
White	✓
Multiracial	—
Students With Disabilities	—
Limited English Proficient	—
Economically Disadvantaged	—

✓ Made AYP

✗ Did not make AYP

— There were not enough students to make an AYP determination.

Four-Year Graduation-Rate Total Cohort for Accountability

Student Group	Met Graduation-Rate Criterion	2009 Four-Year Graduation-Rate Total Cohort	Graduation Rate	State Standard	Progress Target
All Students	✓	54	89%	80%	80%
American Indian or Alaska Native	—	0	—	—	—
Black or African American	—	1	—	—	—
Hispanic or Latino	—	2	—	—	—
Asian or Native Hawaiian/Other Pacific Islander	—	0	—	—	—
White	✓	50	90%	80%	80%
Multiracial	—	1	—	—	—
Students With Disabilities	—	8	—	—	—
Limited English Proficient	—	0	—	—	—
Economically Disadvantaged	—	21	—	—	—

✓ Graduation rate is equal to or greater than the State Standard or the group's Progress Target.

✗ Graduation rate is less than the State Standard and the group's Progress Target.

— There were fewer than 30 students in the cohort.

Five-Year Graduation-Rate Total Cohort for Accountability

Student Group	Met Graduation-Rate Criterion	2008 Five-Year Graduation-Rate Total Cohort	Graduation Rate	State Standard	Progress Target
All Students	✓	49	92%	80%	80%
American Indian or Alaska Native	—	0	—	—	—
Black or African American	—	1	—	—	—
Hispanic or Latino	—	1	—	—	—
Asian or Native Hawaiian/Other Pacific Islander	—	0	—	—	—
White	✓	47	94%	80%	80%
Multiracial	—	0	—	—	—
Students With Disabilities	—	9	—	—	—
Limited English Proficient	—	0	—	—	—
Economically Disadvantaged	—	23	—	—	—

✓ Graduation rate is equal to or greater than the State Standard or the group's Progress Target.

✗ Graduation rate is less than the State Standard and the group's Progress Target.

— There were fewer than 30 students in the cohort.

Graduation Rates for Non-AYP Groups for Accountability

Results for the following groups are NOT used to determine AYP.

Student Group	Four-Year Graduation-Rate Total Cohort		Five-Year Graduation-Rate Total Cohort	
	2009 Four-Year Graduation-Rate Total Cohort	Graduation Rate	2008 Five-Year Graduation-Rate Total Cohort	Graduation Rate
Not American Indian or Alaska Native	54	89%	49	92%
Not Black or African American	53	89%	48	94%
Not Hispanic or Latino	52	90%	48	92%
Not Asian or Native Hawaiian/Other Pacific Islander	54	89%	49	92%
Not White	4	—	2	—
Not Multiracial	53	89%	49	92%
General Education	46	91%	40	93%
English Proficient	54	89%	49	92%
Not Economically Disadvantaged	33	97%	26	—
Male	24	—	24	—
Female	30	87%	25	—
Migrant	0	—	0	—
Not Migrant	54	89%	49	92%

— There were fewer than 30 students in the cohort.

Graduation Rates for Regents with Advanced Designation and CTE Endorsement for Accountability

Percentage of 2009 Graduation-Rate Total Cohort members who graduated as of August 31, 2013 with:

Regents Diploma with an Advanced Designation (This District)	Regents Diploma with an Advanced Designation (Statewide)	Percentage in This District Exceeded Statewide
22%	31%	NO
Regents Diploma with CTE Endorsement (This District)	Regents Diploma with CTE Endorsement (Statewide)	Percentage in This District Exceeded Statewide
11%	4%	YES